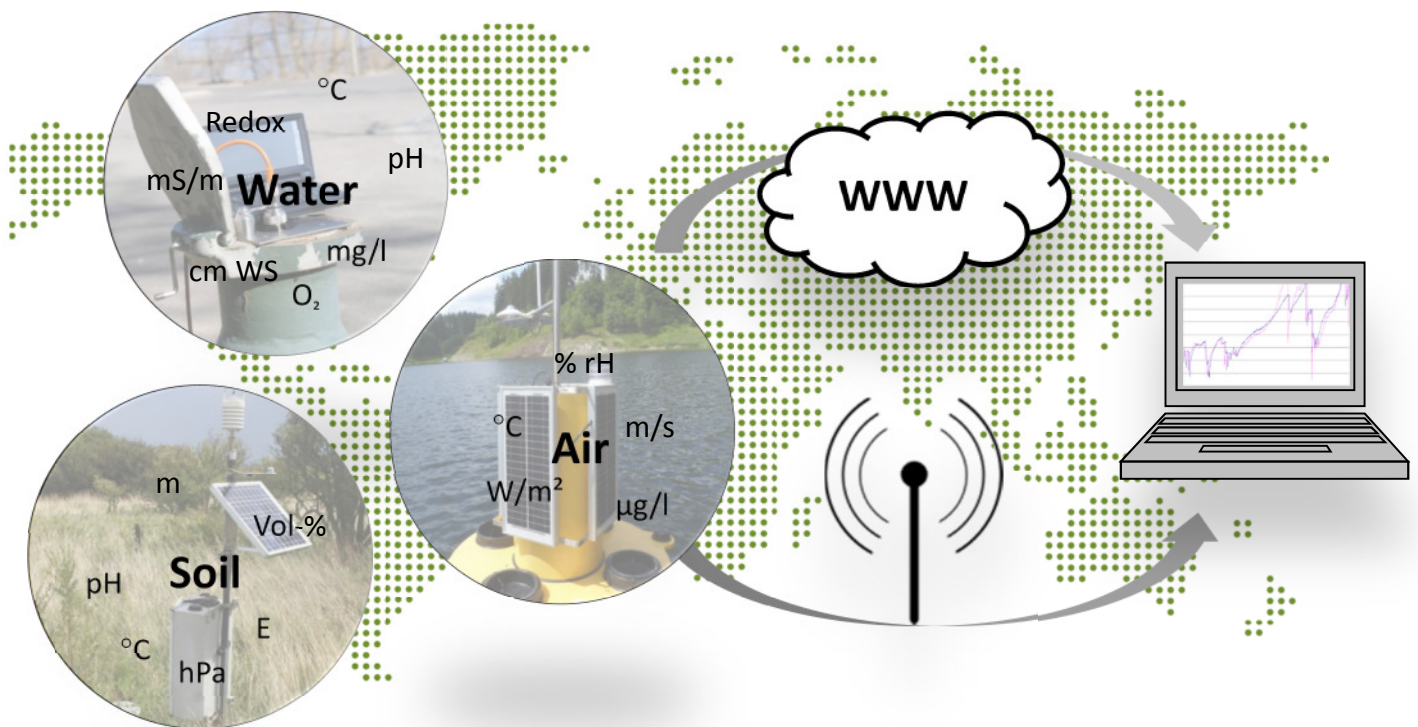


Environmental monitoring

Readings for water, soil, and air in laboratory and field processed, stored, sent and processed automatically

Possibilities and concepts for your measuring tasks - and a simple way for your data from the field to your desktop





ecoTech Umwelt-Meßsysteme GmbH

Nikolausstraße 7
D-53129 Bonn

Fon +49(0)228
85 044 770
Fax +49(0)228
85 044 7709

www.ecoTech-Bonn.de

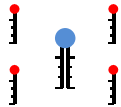
Data acquisition



Single sensors optionally with logger
e.g. enviLog Mini 1 to 2 parameters simultaneously
(e.g. temperature, rH/T, water level)



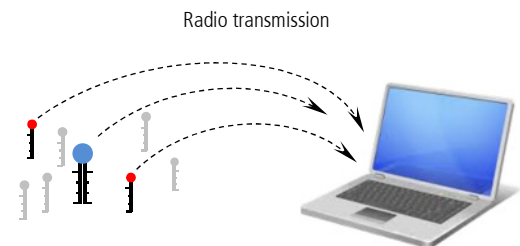
Measuring stations
enviLog Midi/Maxi with connected sensors
diverse parameters, up to 48 channels



Monitoring networks
Measuring stations with „satellite“-Loggers
= enviLog Midi/Maxi & enviLog Mini

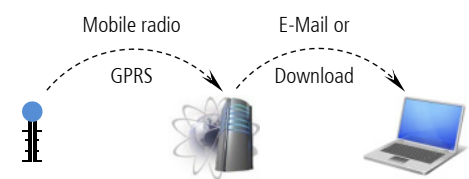
Data transfer

- A) Radio transmission (433 MHz)**
via USB-radio transmission receiver/-transmitter.
Application mainly for single sensors



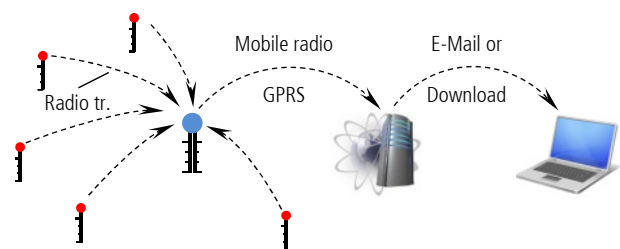
One or several enviLogs transfer the data directly to the PC

- B) Mobile radio (GPRS)**
Application mainly for measuring stations



enviLog with modem sends data via www-server to PC

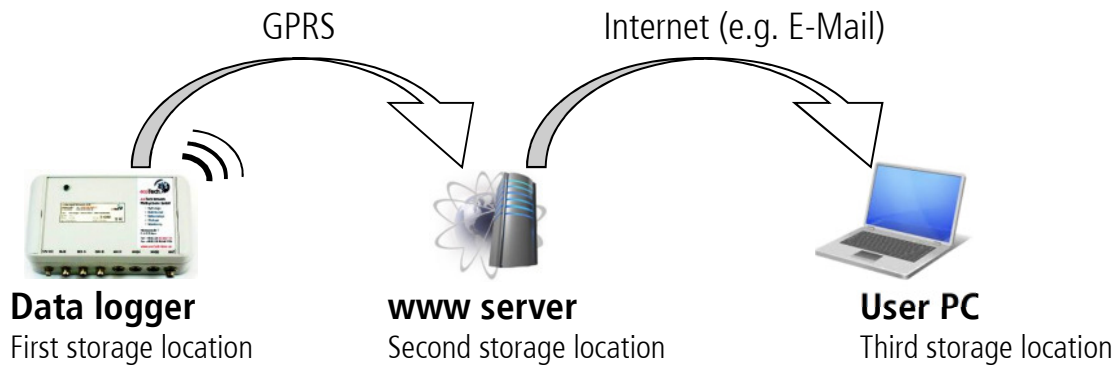
- C) Monitoring networks (combination of A & B)**
Application for measuring stations & monitoring networks possible



enviLog Mini send data to enviLog Maxi with modem, then process as above (B)

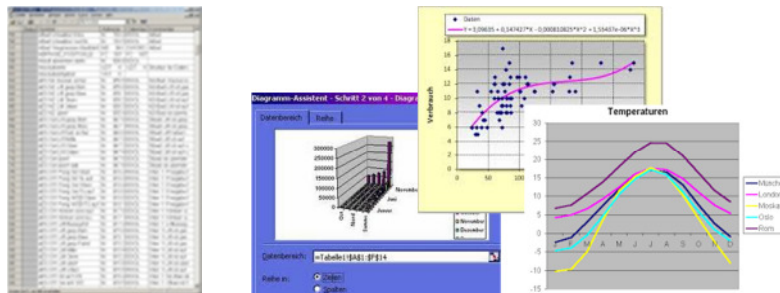
Data safety

Triple data backup by storage on three memory media:



Data processing

A) Spreadsheet analysis



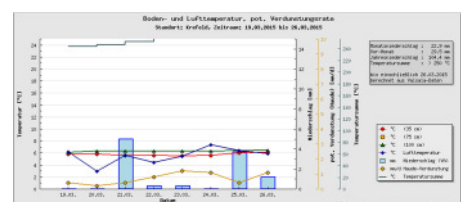
B) enviWatch data base

Automatic management, processing and presentation
via ecoTech data base server (customized)



C) User-owned data base

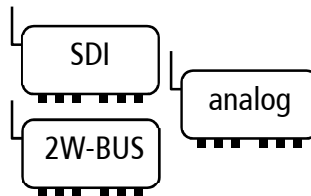
Automatic management, processing and presentation
via customer's data base server
Example: Geological Survey North Rhine-Westphalia NRW



Data logger extension modules

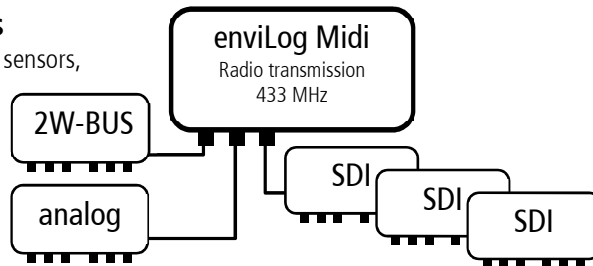
Extension modules for more sensors

- a) SDI-12 with 7 sockets, cascadable
- b) analog with 6 differential inputs
- c) 2W-BUS-interface



Example stations

- A) Setup with up to 48 sensors,
different sensor
types combinable



- B) Central data logger with satellite units for subplots,
distance up to 100 m

