

REMOTE DATA TRANSMISSION UNIT AND DATA LOGGER GSM-2 for YSI

BATTERY POWERED, SUITABLE FOR 2" TUBES

The days are gone when you had to walk every day from measuring point to measuring point in every kind of weather to record the latest water level or read out the installed data logger, because GSM-2 now sends measuring data by e-mail or SMS directly to your office or wherever you are.

Easy to install, GSM-2 integrates a GSM unit that sends the logged data by E-Mail (Internet connection over GPRS) or SMS. This data transfer works both ways, from and to the GSM-2 module, allowing remote data read-out and configuration.

GSM-2 main applications are level measurements in groundwater, wells, tanks, drilling holes, water supply and wastewater.

GSM-2 offers the following features and advantages:

- Battery powered (Low power consumption, battery lasts for years)
- Smaller than 2" diameter (housing easily fits into standard size tubes; vandal-proof)
- Housing integrates battery and antenna
- Different interfaces for sensors
- Built-in atmospheric pressure sensor

The user-friendly free of charge PC software GSM-2 DataManager works as a central monitoring, controlling and organizing unit. It collects and displays measurements received from the GSM-2 unit and stores them in a MySQL database.

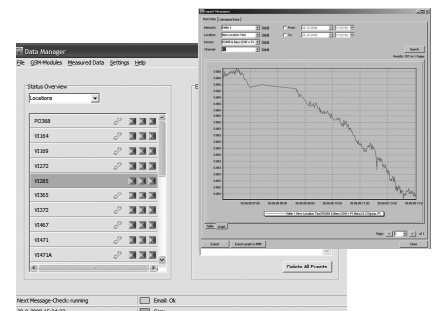
This software offers different types of data export functionalities or web services, also allowing 3rd parties software to gather the data from it and integrate it in their existing data-acquisition systems.

GSM-2 DataManager PC Software key functions are:

- Automatic registering of new measuring locations
- Monitoring of measuring locations
- Remote configuration (i.e. measuring interval, transfer interval, etc.)
- Data export scheduler
- Data chart preview



GSM-2

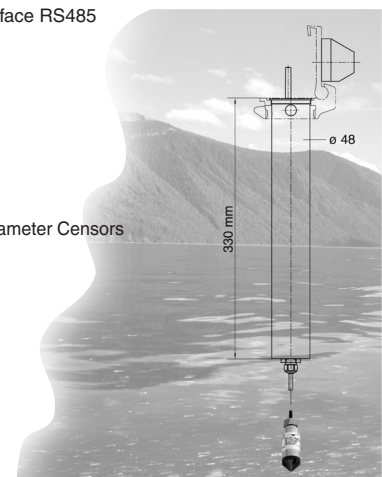


GSM-2 DataManager PC Software

Specifications

Connection	For Series 30 level transmitters or Series DCX data loggers with digital interface RS485
Protection Class	IP65
Supply	Lithium-Battery DD 3,9 V / 32 Ah
Battery Life *	Up to 10 years at 1 measurement per hour and 1 transmission per day
GSM-Band	Quad 850/900/1800/1900 MHz
Transfer Options	E-Mail (SMTP and POP3), SMS and Data Connection (V.32 / V.110)
Antenna Interface	SMA Female
Supply for Sensors	12 V / 5 V / 3,7 V
Interfaces	RS 485 KELLER-BUS / 1 Voltage Input (0...2,5 V, 10 Bit) / SDI-12 for Multiparameter Sensors
Temperature Range	-20 ... 50 °C
Shortest Meas.-/Sending Rate	1 minute
Housing Material	Stainless Steel 316L (DIN 1.4435)
Housing Dimensions	48 x 330 mm (diameter x length)
Integrated Barometric Sensor:	
Accuracy / Resolution	typ. $\pm 0,5$ mbar (-20...40 °C) / typ. 0,2 mbar
Long-Term Stability	typ. ± 1 mbar (12 months)
Temperature Accuracy	typ. ± 1 °C, Resolution typ. 0,2 °C

* External influences could reduce battery capacity



Subject to alterations

04/2012

KELLER AG für Druckmesstechnik
KELLER Ges. für Druckmesstechnik mbH

St. Gallerstrasse 119
Schwarzwaldstrasse 17

CH-8404 Winterthur
D-79798 Jestetten

Tel. +41 (0)52 - 235 25 25
Tel. +49 (0)7745 - 9214 - 0

Fax +41 (0)52 - 235 25 00
Fax +49 (0)7745 - 9214 - 60